



INSTRUCTION BULLETIN

No. 9018398
Machine: See Synopsis
Published: 01-2024
Rev. 00

NOTE: DO NOT DISCARD the Parts List from the Instruction Bulletin. Place the Parts List in the appropriate place in the machine manual for future reference. Retaining the Parts List will make it easier to reorder individual parts and will save the cost of ordering an entire kit.

NOTE: Numbers in parenthesis () are reference numbers for parts listed in Bill of Materials.

Installation instructions for **kit number 9018397**

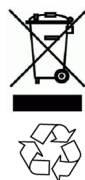
Kit installation must be performed by TennantTrue[®] service or an authorized service provider.

SYNOPSIS:

This kit contains the parts needed to replace the ec- H2O electrode plate on T3, T5, T7, 5680, T20, T17, T16, T15, and T12 scrubbers and M17, M20, and M30 sweeper- scrubbers.
Please follow step-by-step instructions.

SPECIAL TOOLS/CONSIDERATIONS: NONE

(Estimated time to complete: 1- 2 hours)



PROTECT THE ENVIRONMENT

Please dispose of packaging materials, used machine components such as batteries and fluids in an environmentally safe way according to local waste disposal regulations.

Always remember to recycle.

PREPARATION: ALL MACHINES

FOR SAFETY: Before leaving or servicing machine, stop on level surface, turn off machine, and remove key.

1. Disconnect the battery cable from the machine.

WARNING: Always disconnect battery cables from machine before working on electrical components.

2. Open shrouds/covers and remove components necessary to access/remove the ec- H2O module. Set all removed components and hardware aside. All these items must be reinstalled onto the machine after the electrode plate is replaced in the ec- H2O module.

INSTALLATION (MODULE 1049958 AND 1212103):

1. Disconnect the hoses from the ec- H2O module inlet and outlet ports. Set hose clamps aside.
2. Disconnect the main wire harness from the ec- H2O module.
3. **If necessary to remove the entire ec- H2O module to access the electrode plate:** Remove the ec- H2O module from the machine. Set all hardware aside.
4. Remove module upper housing from the bottom housing. Set all hardware aside. (Fig. 1/Fig. 3/Fig. 4)
5. Disconnect the PVC hose from the 5- plate electrode IN port. Set the hose clamp aside. Discard the removed PVC hose. (Fig. 1/ Fig. 3/Fig. 4)

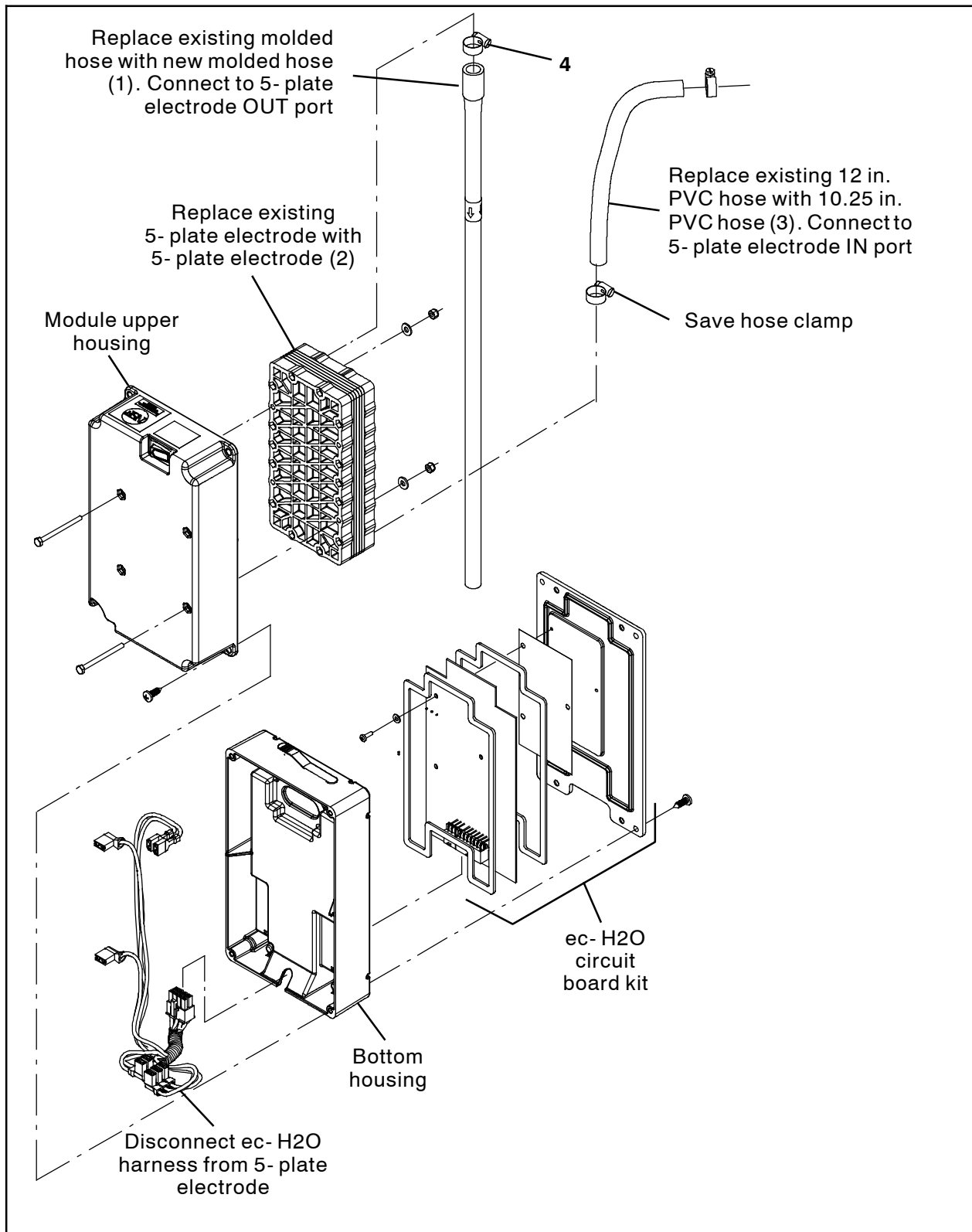


FIG. 1

6. Disconnect the molded hose from the 5-plate electrode OUT port. Discard the removed PVC hose and hose clamp. (Fig. 1/Fig. 3/ Fig. 4)

7. Remove the hardware securing the 5-plate electrode to the module upper housing. Set all hardware aside. (Fig. 1/Fig. 3/Fig. 4)

8. Disconnect the ec- H2O harness connections from the bottom of the 5- plate electrode. Discard the 5- plate electrode. (Fig. 1)
9. Connect the ec- H2O harness to the new 5- plate electrode (2). (Fig. 1)
10. Use saved hardware to install the 5- plate electrode (2) into the module upper housing. (Fig. 1/Fig. 3/Fig. 4)
11. Use saved clamp to connect the 10.25 in. PVC hose to the 5- plate electrode (2) IN port. (Fig. 2)

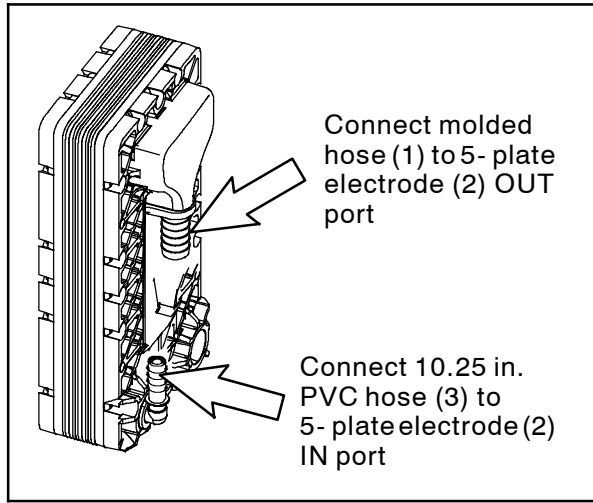


FIG. 2

12. Use a hose clamp (4) to connect the molded hose (1) to the 5- plate electrode (2) OUT port. (Fig. 2)

13. Reinstall module upper housing onto the bottom housing. Do Not pinch hoses/wires between the module upper housing and the bottom housing. (Fig. 1/Fig. 3/Fig. 4)
14. **If ec- H2O module was removed from the machine to install the new 5- plate electrode (2):** Reinstall the ec- H2O module onto the machine.
15. If necessary, cut the the molded hose (1) to the appropriate length to be reconnected to the existing machine ec- H2O plumbing. (Fig. 1)
16. Reconnect the battery cable to the machine.
17. Test the machine. Turn the key switch on. Observe around the ec- H2O module/hose connections for leaks. Observe the display for error codes. Troubleshoot/repair as necessary to eliminate all ec- H2O error codes.

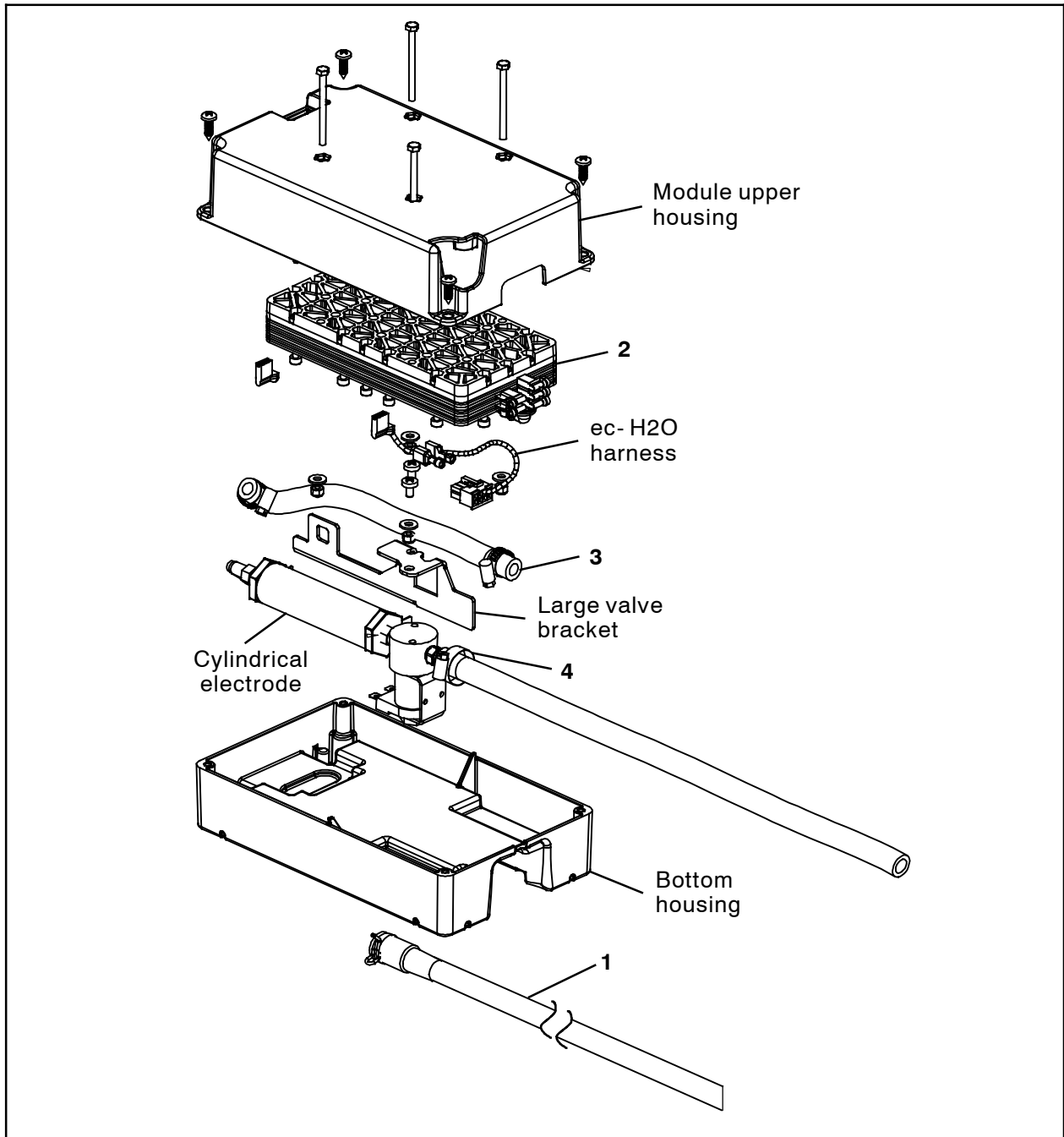


FIG. 3 - 1049958

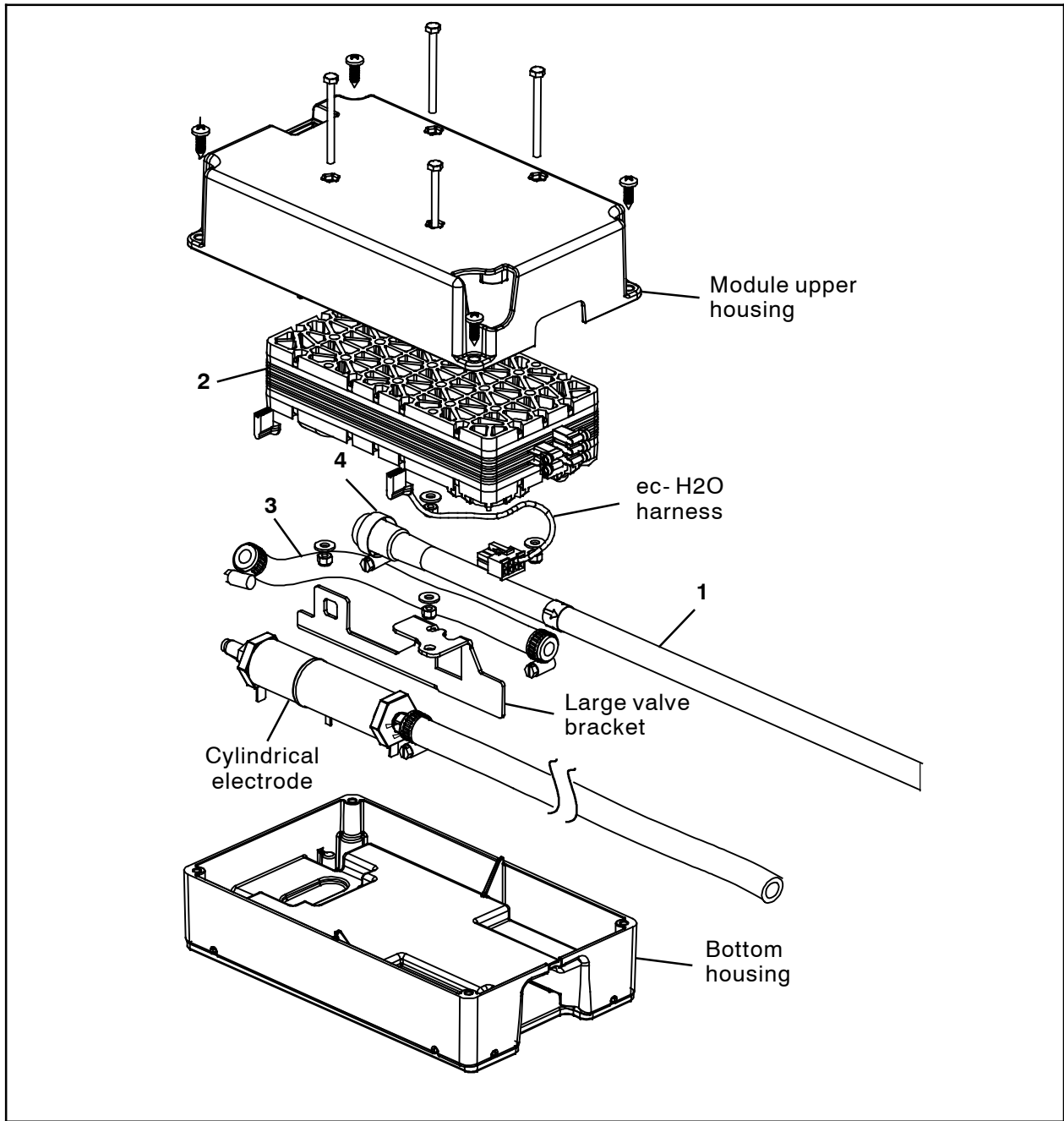


FIG. 4 - 1212103

INSTALLATION (MODULE 1060516):

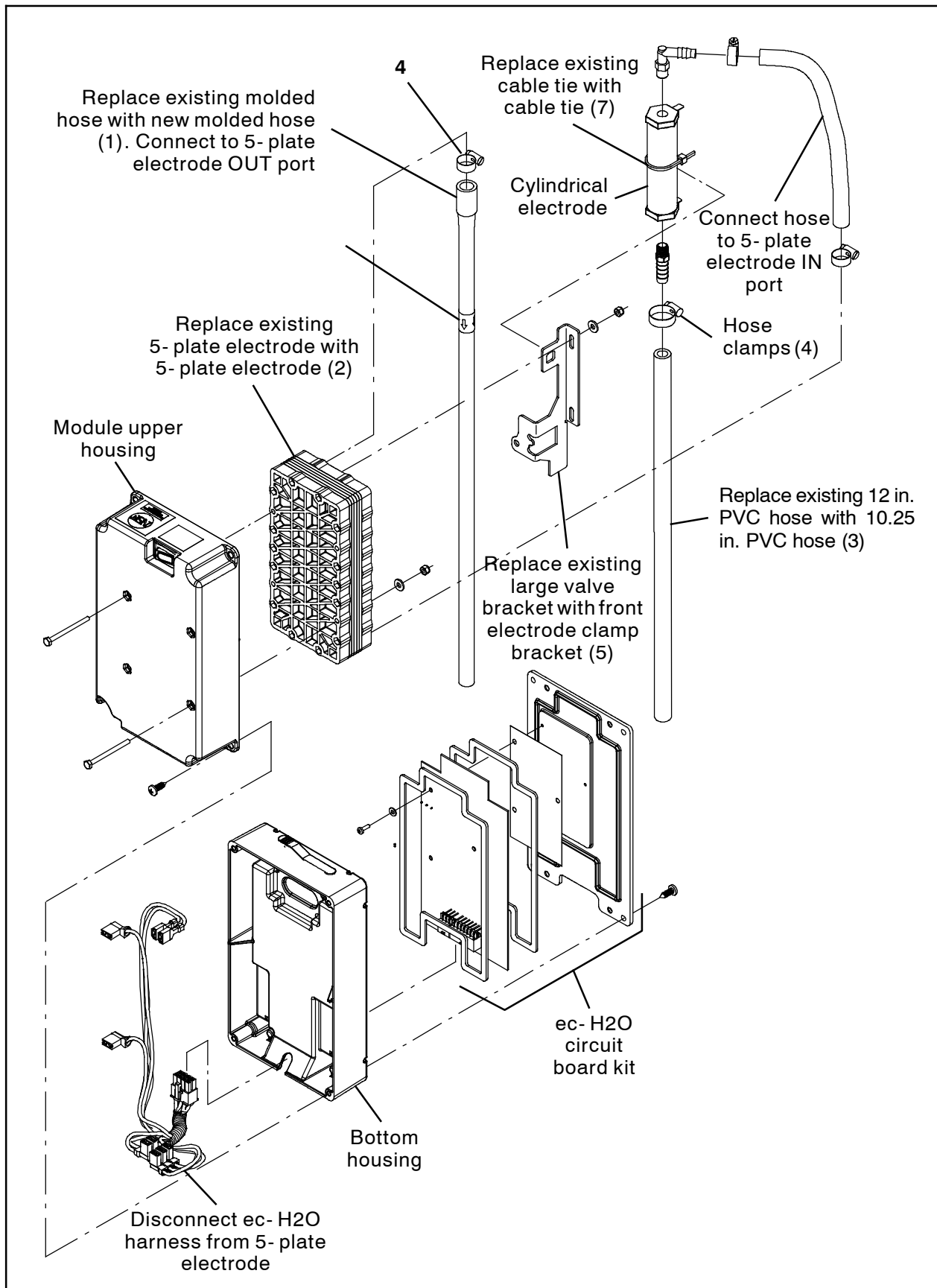


FIG. 5

1. Disconnect the hoses from the ec- H2O module inlet and outlet ports. Set hose clamps aside.
2. Disconnect the main wire harness from the ec- H2O module.
3. **If necessary to remove the entire ec- H2O module to access the electrode plate:** Remove the ec- H2O module from the machine. Set all hardware aside.
4. Disconnect the PVC hose from the 5- plate electrode IN port. Set the hose clamp aside. Discard the removed PVC hose. (Fig. 5)
5. Disconnect the molded hose from the 5- plate electrode OUT port. Discard the removed PVC hose and hose clamp. (Fig. 5)
6. Remove the hardware securing the 5- plate electrode to the module upper housing. Set all hardware aside. (Fig. 5)
7. Disconnect the ec- H2O harness connections from the bottom of the 5- plate electrode. Discard the 5- plate electrode. (Fig. 5)
8. Cut the cable tie securing the cylindrical electrode to the electrode bracket. (Fig. 5)
9. Remove the electrode bracket from the 5- plate electrode. Discard the electrode bracket. Set the hardware aside. (Fig. 5)
10. Remove the 5- plate electrode from the module upper housing. Discard the 5- plate electrode. Set the hardware aside. (Fig. 5)

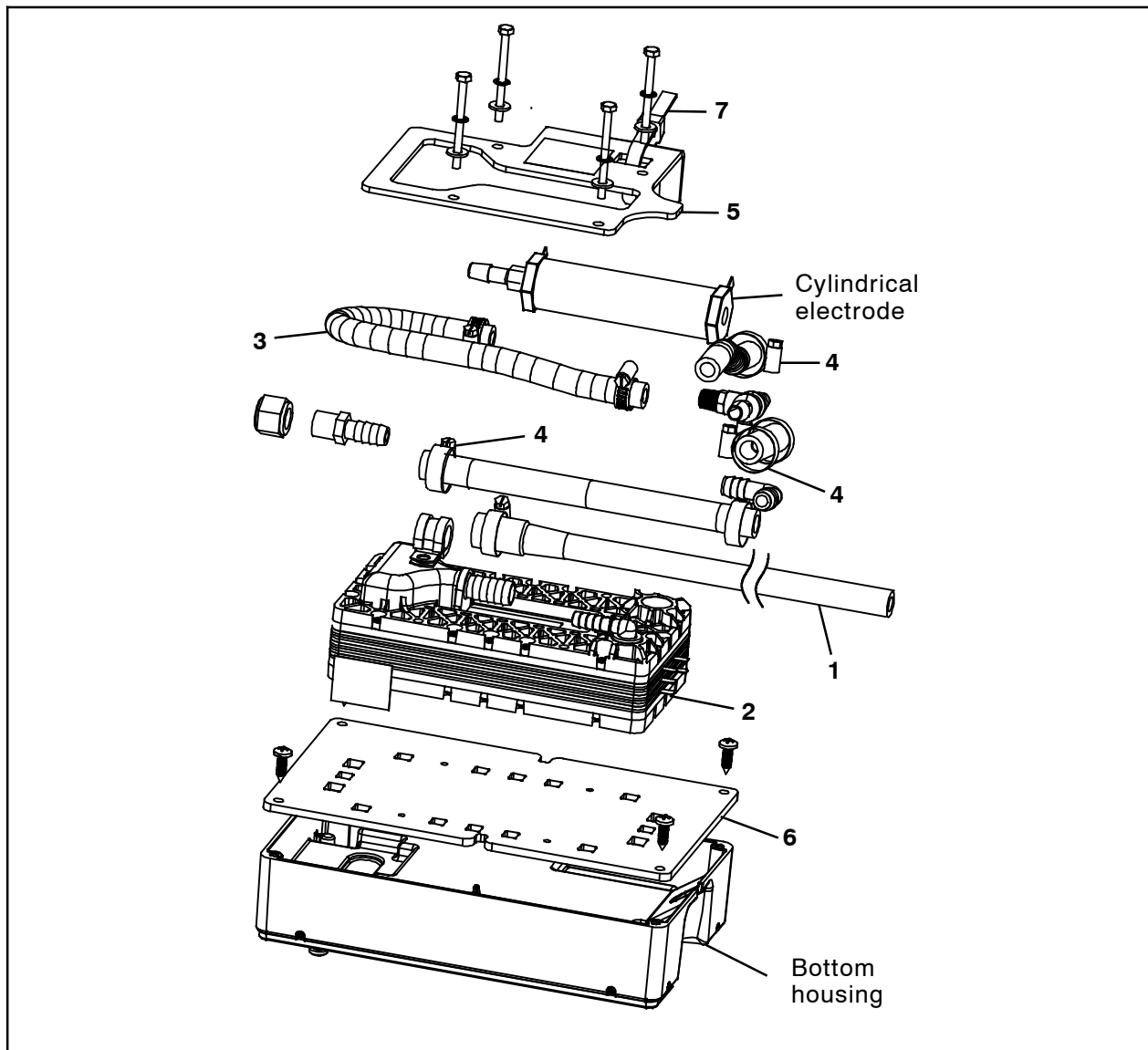


FIG. 6

11. Remove the back mounting plate from the module upper housing. Discard the back mounting plate. Set the hardware aside. (Fig. 5)
12. Use saved hardware to install the new back mounting plate (6) onto the module upper housing. (Fig. 6)
13. Connect the ec- H2O harness to the new 5- plate electrode (2). (Fig. 6)
14. Use saved hardware to install the 5- plate electrode (2) and electrode bracket (6) into the module upper housing. (Fig. 6)
15. Use a zip tie (7) to secure the cylindrical electrode to the electrode bracket (6). (Fig. 6)
16. Use saved clamp to connect the 10.25 in. PVC hose to the 5- plate electrode (2) IN port. (Fig. 6)
17. Use a hose clamp (4) to connect the molded hose (1) to the 5- plate electrode (2) OUT port. (Fig. 6)
18. **If ec- H2O module was removed from the machine to install the new 5- plate electrode (2):** Reinstall the ec- H2O module onto the machine.
19. If necessary, cut the the molded hose (1) to the appropriate length to be reconnected to the existing machine ec- H2O plumbing. (Fig. 6)
20. Reconnect the battery cable to the machine.
21. Test the machine. Turn the key switch on. Observe around the ec- H2O module/hose connections for leaks. Observe the display for error codes. Troubleshoot/repair as necessary to eliminate all ec- H2O error codes.

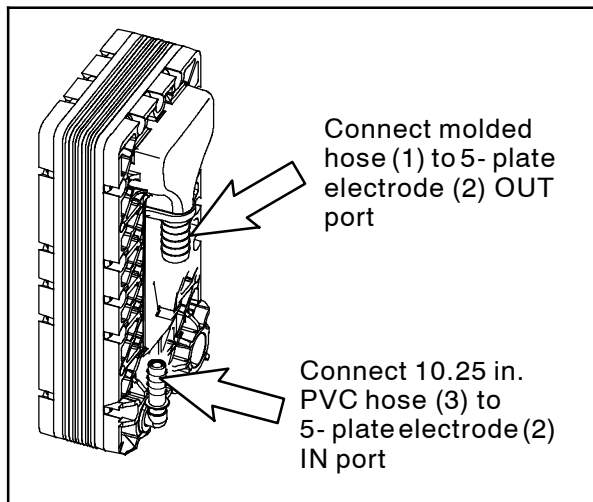


FIG. 7

Bill Of Materials For Electrode Kit, 5 Plate, Hi Flow, Replmt - 9018397

Ref.	Tennant Part No.	Description	Qty.
1	1243570	Hose, Molded, BM08/BM05	1
2	1259255	Electrode, 5 Plate [De Nora]	1
3	1051266	Hose, PVC, Brd, 0.31id 0.53od, Bulk, Clr (0.854 ft)	1
4	54333	Clamp, Hose, Worm Drive, 0.31-0.88d, .31w	2
5	1235066	Bracket, Clamp, Electrode, Front [WS] - Module 1060516 Only	1
6	1237036	Plate, Mtg, Back - Module 1060516 Only	1
7	763116	Tie, Cable, Nyl, 15.3l .25w 4.50d Max - Module 1060516 Only	1

TENNANT COMPANY
 10400 Clean Street
 Eden Prairie, MN 55344- 2650